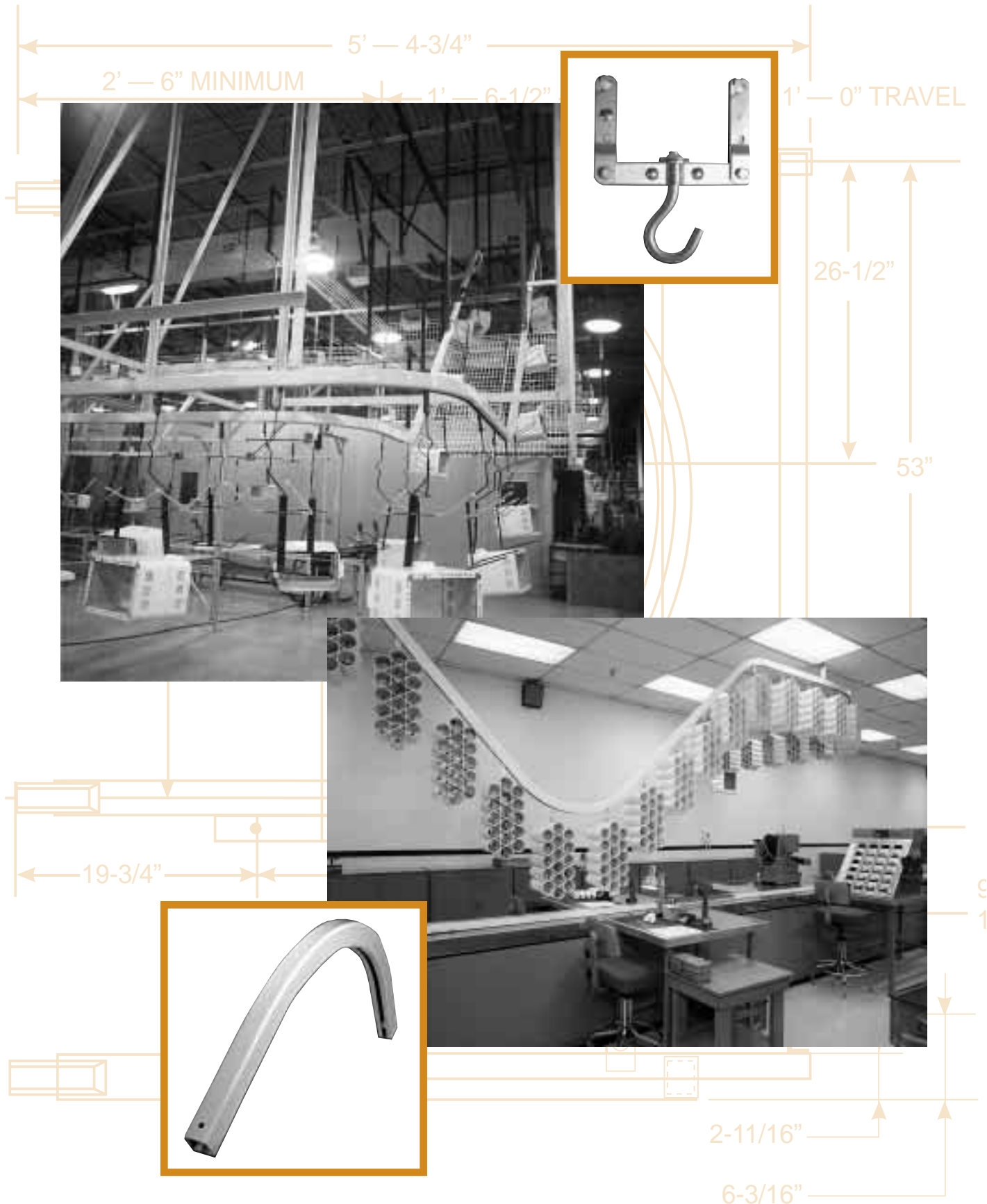


ZIG-ZAG

2035 Continuous Overhead Power Chain Conveyor



THE ORIGINAL ENCLOSED TRACK CONVEYOR

Richards-Wilcox Zig-Zag conveyor is constructed of standard, modular components that guarantee easy installation, modification, and maintenance. Standard components also guarantee quick accessibility through local stocking distributors.

FEATURES:

Eleven Standard Components

- Straight Track, 3/16" thick, stocked in 10' lengths
- Welding jig
- Horizontal Curves, 3/16" thick, 90°, flame hardened
- Top Vertical Curves, 3/16" thick, 90°, flame hardened
- Bottom Vertical Curves, 3/16" thick, 90°, flame hardened
- Conveyor Chain, 6" pitch
- Take-up Assembly
- Inspection Section
- Chain Oiler
- Standard Drive Packages
- Load Pendant Attachments

Vertical Chain Wheels on 6" Centers

- Spread the same amount of load over more wheels
- Reduce the point loading on track and reduce wear

Capacities

- 75 lbs. per load pin
- Standard drive packages up to 750 lb. chain pull



CONVEYOR CHAIN



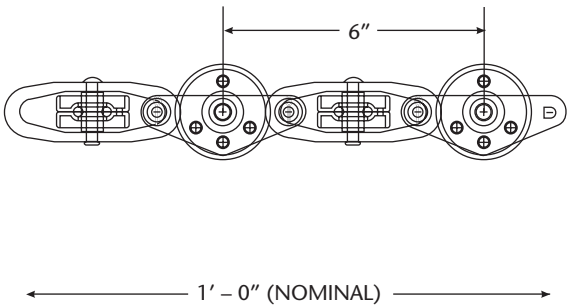
2035.01974 CHAIN

Zig-Zag chain is made with heavy steel stampings with a hardened inner race. Precision alloy balls make Zig-Zag chain rugged and durable for prolonged dependable life and operation. (Recommended maximum 750 pounds chain pull)

FEATURES

6" Pitch Chain

Zig-Zag chain has a pitch of 6" and is the shortest in the industry. This allows up to 33 percent more productivity. The pitch of our chain allows you to space load pendants closer with less wheel loading, allowing for more product throughput. This shorter pitch also allows for tighter radius horizontal curves. Richards-Wilcox can provide standard stock 18" radius horizontal curves.



Load Pin

Zig-Zag chain is manufactured with a pendant load pin. Unlike the industry, Richards-Wilcox pendants are mounted to a load pin and not the wheel axle. This eliminates unnecessary wear and torsional loads to critical parts of the chain, thereby increasing your productivity and decreasing your downtime.

Installation and Maintenance

By design, Zig-Zag chain is made for ease of installation and maintenance. Our chain may be disassembled at any point by simply removing a cotter pin. Zig-Zag chain is available from stock in 10' boxes, or in bulk 300' barrels.

VERTICAL CURVES

The illustration below shows the action of the wheels and the manner in which they bear against the inside of the track when going around vertical curves. The wheels, you will note, contact the top of the track on bottom curves and the bottom of the track on top curves. The chain, in this way, is guided around short radius vertical curves.

HORIZONTAL CURVES

The illustration below shows how the chain passes around horizontal curves without the use of special guides, sprockets, or wheel turns.

Please note from the cutaway section how the lateral wheels bear on the side of the track when the chain is drawn around curves. A series of wheels constantly share the load imposed upon the track, thereby reducing friction and insuring smooth conveyor operation.

Curves with these radii are standard:
1'-6", 2'-0", 2'-3", 3'-0", 3'-3", 4'-0" and 4'-3".

NOTE: All curves up to 3'-0" are available hardened for increased life and made of heavy-duty 3/16" material, the heaviest in the industry.



Looking through side of track. Track cut-away of chain passing through reverse vertical curve.



Looking through top of track. Track cut-away to give bird's eye view of chain in track, illustrating operation in horizontal curve.



2035.00980 Top
Vertical Curve



2035.00981 Bottom
Vertical Curve



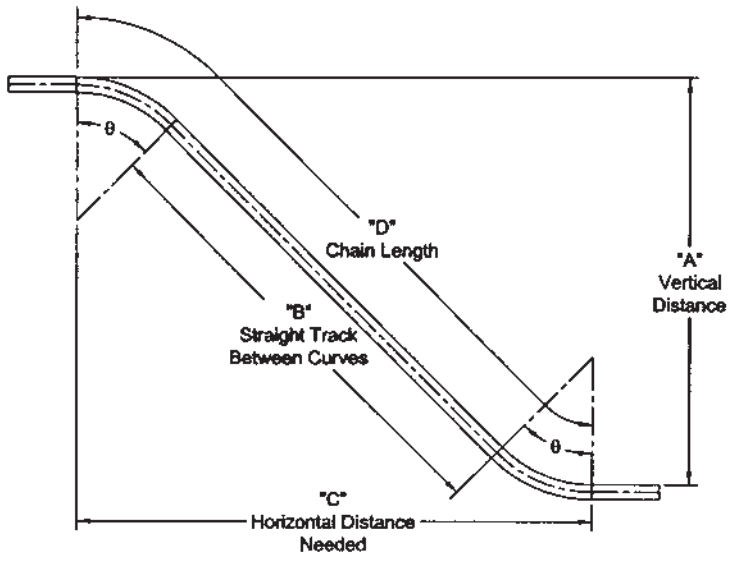
2035.01352
Horizontal Curve

FIELD FABRICATED CURVES

VERTICAL CURVE DATA

Note: The Vertical Curve dimensions in the chart below are based on using 2'-0" radius curves.

45°, 2'-0" radius vertical curve shown.



A	30°			45°			60°		
	B	C	D	B	C	D	B	C	D
6 ⁷ / ₁₆ "	0'-0"	2'-0"	2'-1 ¹ / ₈ "	—	—	—	—	—	—
9"	0'-5 ¹ / ₈ "	2'-4 ⁷ / ₁₆ "	2'-6 ¹ / ₄ "	—	—	—	—	—	—
12"	0'-11 ¹ / ₈ "	2'-9 ⁵ / ₈ "	3'-1 ¹ / ₄ "	—	—	—	—	—	—
1'-2"	1'-3 ³ / ₈ "	3'-1 ¹ / ₈ "	3'-4 ¹ / ₄ "	1 ¹ / ₁₆ "	2'-9 ¹⁵ / ₁₆ "	3'-1 ¹¹ / ₁₆ "	—	—	—
1'-6"	1'-11 ¹ / ₈ "	3'-8 ³ / ₁₆ "	4'-1 ¹ / ₄ "	5 ⁹ / ₁₆ "	3'-1 ⁷ / ₈ "	3'-7 ¹ / ₄ "	—	—	—
1'-9"	2'-5 ¹ / ₈ "	4'-1 ¹ / ₄ "	4'-6 ¹ / ₄ "	9 ¹³ / ₁₆ "	3'-4 ⁷ / ₈ "	3'-11 ¹ / ₂ "	—	—	—
2'-0"	2'-11 ¹ / ₈ "	4'-6 ⁷ / ₁₆ "	5'-1 ¹ / ₄ "	1'-2 ¹ / ₁₆ "	3'-7 ⁷ / ₈ "	4'-3 ³ / ₄ "	0'-1 ¹ / ₁₆ "	3'-5 ⁹ / ₁₆ "	4'-2 ¹ / ₄ "
2'-3"	3'-5 ¹ / ₈ "	4'-11 ⁵ / ₈ "	5'-6 ¹ / ₄ "	1'-6 ⁵ / ₁₆ "	3'-10 ⁷ / ₈ "	4'-8"	0'-3 ⁷ / ₁₆ "	3'-7 ⁵ / ₁₆ "	4'-5 ³ / ₄ "
2'-6"	3'-11 ¹ / ₈ "	5'-1 ¹³ / ₁₆ "	6'-1 ¹ / ₄ "	1'-10 ⁹ / ₁₆ "	4'-1 ⁷ / ₈ "	5'-1 ¹ / ₄ "	0'-6 ¹⁵ / ₁₆ "	3'-9 ¹ / ₁₆ "	4'-9 ³ / ₁₆ "
2'-9"	4'-5 ¹ / ₈ "	5'-10"	6'-6 ¹ / ₄ "	2'-2 ¹³ / ₁₆ "	4'-4 ⁷ / ₈ "	5'-10 ¹ / ₈ "	0'-10 ³ / ₈ "	3'-10 ³ / ₄ "	5'-1 ¹ / ₁₆ "
3'-0"	4'-11 ¹ / ₈ "	6'-3 ³ / ₁₆ "	7'-1 ¹ / ₄ "	2'-7 ¹ / ₁₆ "	4'-7 ⁷ / ₈ "	5'-8 ³ / ₄ "	1'-1 ⁷ / ₈ "	4'-1 ¹ / ₂ "	5'-4 ¹ / ₈ "
3'-6"	5'-11 ¹ / ₈ "	7'-1 ⁵ / ₈ "	8'-1 ¹ / ₄ "	3'-3 ¹ / ₂ "	5'-1 ⁷ / ₈ "	6'-5 ³ / ₁₆ "	1'-8 ¹³ / ₁₆ "	4'-3 ¹⁵ / ₁₆ "	5'-11 ¹ / ₁₆ "
4'-0"	6'-11 ¹ / ₈ "	8'-0"	9'-1 ¹ / ₄ "	4'-1 ¹ / ₁₆ "	5'-7 ⁷ / ₈ "	7'-1 ¹¹ / ₁₆ "	2'-3 ¹¹ / ₁₆ "	4'-7 ⁷ / ₁₆ "	6'-6"
4'-6"	7'-11 ¹ / ₈ "	8'-10 ³ / ₈ "	10'-1 ¹ / ₄ "	4'-8 ¹ / ₂ "	6'-1 ⁷ / ₈ "	7'-10 ¹³ / ₁₆ "	2'-5 ⁸ / ₁₆ "	4'-10 ⁷ / ₈ "	7'-1 ¹⁵ / ₁₆ "
5'-0"	8'-11 ¹ / ₈ "	9'-8 ¹³ / ₁₆ "	11'-1 ¹ / ₄ "	5'-5 ¹ / ₁₆ "	6'-7 ⁷ / ₈ "	8'-6 ¹¹ / ₁₆ "	3'-5 ⁹ / ₁₆ "	5'-2 ³ / ₈ "	7'-7 ¹³ / ₁₆ "
5'-6"	9'-11 ¹ / ₈ "	10'-7 ¹³ / ₁₆ "	12'-1 ¹ / ₄ "	6'-1 ⁷ / ₁₆ "	7'-1 ⁷ / ₈ "	9'-3 ¹ / ₈ "	4'-1 ¹ / ₂ "	5'-5 ¹³ / ₁₆ "	8'-2 ³ / ₄ "
6'-0"	10'-11 ¹ / ₈ "	11'-5 ⁹ / ₁₆ "	13'-1 ¹ / ₄ "	6'-9 ¹⁵ / ₁₆ "	7'-7 ⁷ / ₈ "	9'-11 ⁵ / ₈ "	4'-7 ⁷ / ₁₆ "	5'-9 ⁵ / ₁₆ "	8'-9 ¹ / ₁₆ "
6'-6"	11'-11 ¹ / ₈ "	12'-3 ¹⁵ / ₁₆ "	14'-1 ¹ / ₄ "	7'-6 ⁷ / ₁₆ "	8'-1 ⁷ / ₈ "	10'-8 ¹ / ₈ "	5'-2 ³ / ₈ "	6'-3 ⁴ / ₁₆ "	9'-4 ⁵ / ₈ "
7'-0"	12'-11 ¹ / ₈ "	13'-2 ³ / ₈ "	15'-1 ¹ / ₄ "	8'-2 ¹⁵ / ₁₆ "	8'-7 ⁷ / ₈ "	11'-4 ⁵ / ₈ "	5'-9 ⁵ / ₁₆ "	6'-4 ³ / ₁₆ "	9'-11 ⁹ / ₁₆ "
7'-6"	13'-11 ¹ / ₈ "	14'-3 ³ / ₄ "	16'-1 ¹ / ₄ "	8'-11 ³ / ₄ "	9'-1 ⁷ / ₈ "	12'-1 ¹ / ₈ "	6'-4 ³ / ₁₆ "	6'-7 ¹¹ / ₁₆ "	10'-6 ¹ / ₂ "
8'-0"	14'-11 ¹ / ₈ "	14'-11 ¹ / ₈ "	17'-1 ¹ / ₄ "	9'-7 ⁷ / ₈ "	9'-7 ⁷ / ₈ "	12'-9 ⁹ / ₁₆ "	6'-11 ¹ / ₈ "	6'-11 ¹ / ₈ "	11'-1 ³ / ₈ "
8'-6"	15'-11 ¹ / ₈ "	15'-9 ¹ / ₂ "	18'-1 ¹ / ₄ "	10'-4 ³ / ₄ "	10'-1 ⁷ / ₈ "	13'-6 ¹ / ₁₆ "	7'-6 ¹ / ₁₆ "	7'-2 ⁵ / ₈ "	11'-8 ⁵ / ₁₆ "
9'-0"	16'-11 ¹ / ₈ "	16'-7 ¹⁵ / ₁₆ "	19'-1 ¹ / ₄ "	11'-7 ⁸ / ₁₆ "	10'-7 ⁷ / ₈ "	14'-2 ⁹ / ₁₆ "	8'-1"	7'-6 ¹ / ₁₆ "	12'-3 ¹ / ₄ "
9'-6"	17'-11 ¹ / ₈ "	17'-6 ⁵ / ₁₆ "	20'-1 ¹ / ₄ "	11'-9 ⁵ / ₁₆ "	11'-1 ⁷ / ₈ "	14'-1 ¹ / ₁₆ "	8'-7 ¹⁵ / ₁₆ "	7'-9 ¹ / ₂ "	12'-10 ¹³ / ₁₆ "
10'-0"	18'-11 ¹ / ₈ "	18'-4 ¹ / ₁₆ "	21'-1 ¹ / ₄ "	12'-5 ¹³ / ₁₆ "	11'-7 ⁷ / ₈ "	15'-7 ¹ / ₂ "	9'-2 ⁷ / ₈ "	8'-1"	13'-5 ¹ / ₈ "
10'-6"	19'-11 ¹ / ₈ "	19'-3 ³ / ₈ "	22'-1 ¹ / ₄ "	13'-2 ⁵ / ₁₆ "	12'-1 ⁷ / ₈ "	16'-4"	9'-9 ³ / ₄ "	8'-4 ⁷ / ₁₆ "	14'-1 ¹ / ₁₆ "
11'-0"	20'-11 ¹ / ₈ "	20'-1 ¹ / ₂ "	23'-1 ¹ / ₄ "	13'-10 ¹³ / ₁₆ "	12'-7 ⁷ / ₈ "	17'-1 ¹ / ₂ "	10'-4 ¹¹ / ₁₆ "	8'-7 ¹⁵ / ₁₆ "	14'-7"
11'-6"	21'-11 ¹ / ₈ "	20'-11 ¹ / ₈ "	24'-1 ¹ / ₄ "	14'-7 ¹ / ₄ "	13'-1 ⁷ / ₈ "	17'-9"	10'-11 ⁵ / ₈ "	8'-11 ³ / ₈ "	15'-1 ⁷ / ₈ "
12'-0"	22'-11 ¹ / ₈ "	21'-10 ¹ / ₄ "	25'-1 ¹ / ₄ "	15'-3 ³ / ₄ "	13'-7 ⁷ / ₈ "	18'-5 ¹ / ₁₆ "	11'-6 ⁹ / ₁₆ "	9'-2 ⁷ / ₈ "	15'-8 ¹³ / ₁₆ "
12'-6"	23'-11 ¹ / ₈ "	22'-8 ¹¹ / ₁₆ "	26'-1 ¹ / ₄ "	16'-1 ¹ / ₄ "	14'-1 ⁷ / ₈ "	19'-1 ¹⁵ / ₁₆ "	12'-1 ³ / ₈ "	9'-6 ⁵ / ₁₆ "	16'-3 ³ / ₄ "

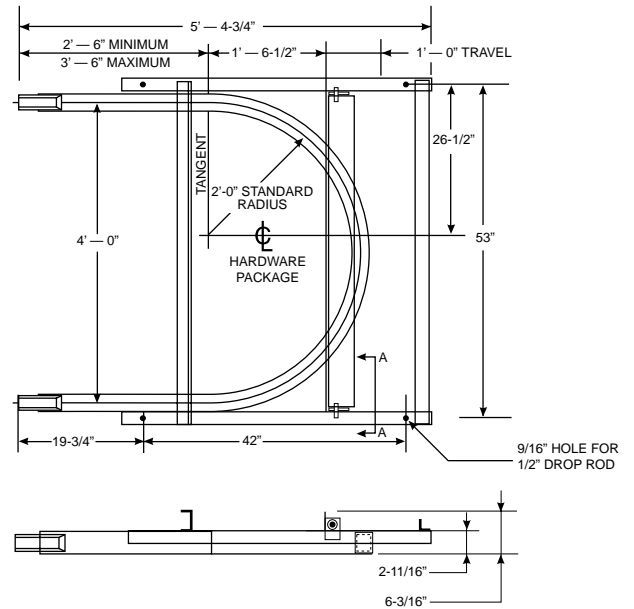
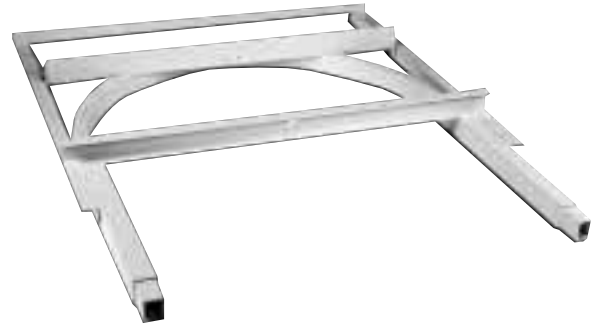
TAKE-UP ASSEMBLIES

2035.01687 FRAMED TAKE-UP

Factory made, ready to be hoisted and hung, this frame provides a rigid base and helps make alignment positive. The frame is permanently mounted; only the actuator and conveyor move. Tensioning is accomplished with your choice of screw, spring, or air cylinder packages listed below. Available for 2'-0" R curves (4' maximum track spread).

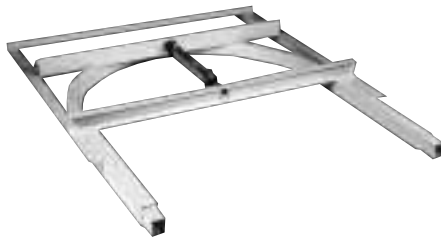
Some type of tensioning is necessary on all Zig-Zag conveyor systems to take up slack chain created by wear or temperature changes. In addition to the factory made versions described on this page, Richards-Wilcox makes screw take-up fittings for field assembly.

Note: Complete unit consists of one frame and one set of hardware for screw, spring or air take-up.

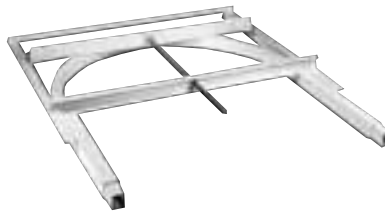


FRAMED TAKE-UP ACTUATOR PACKAGES

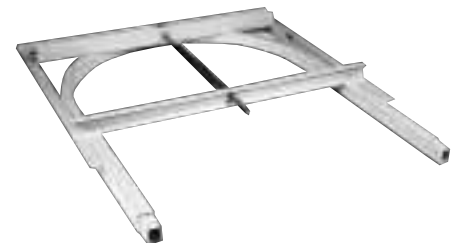
Catalog No.	Description
2035.01700	Air Take-Up Package
2035.02685	Screw Take-Up Package
2035.02686	Spring Take-Up Package



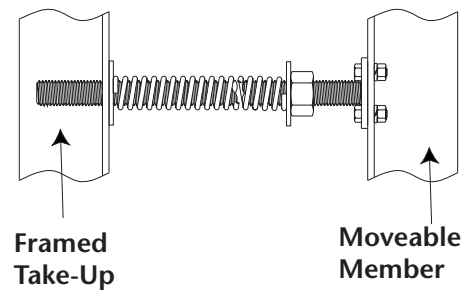
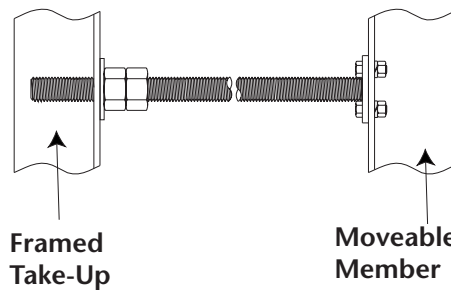
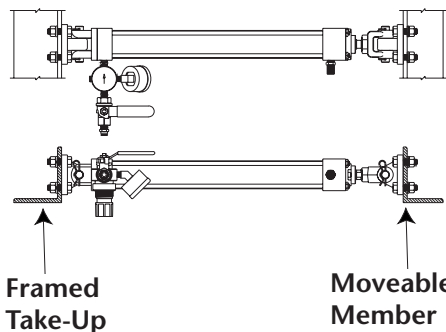
2035.01700 Air Package



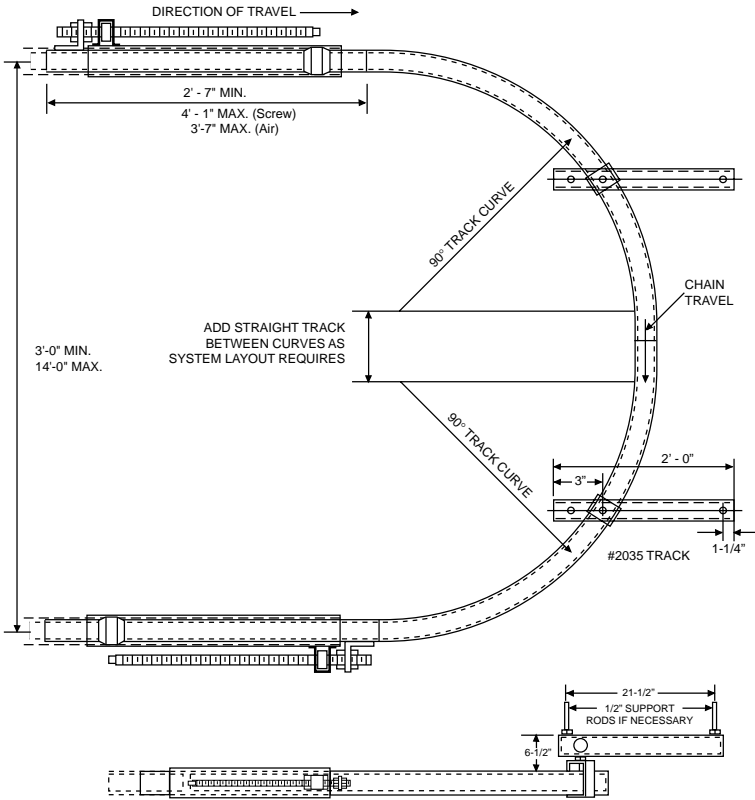
2035.02685 Screw Package



2035.02686 Spring Package



TAKE-UP FITTINGS AND EXPANSION SLEEVE

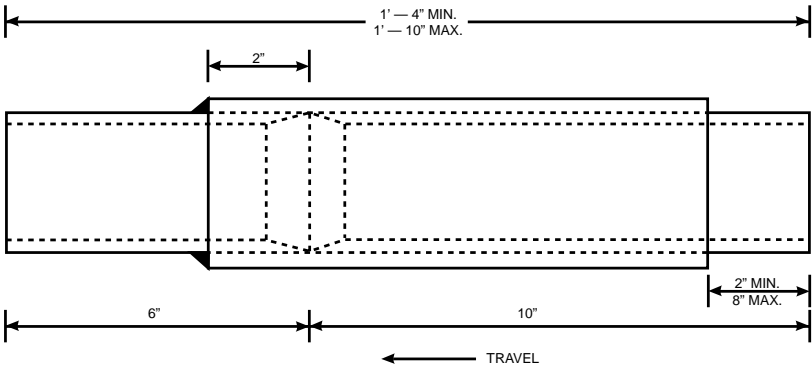


2035.00583

**2035.00583 SCREW
TAKE-UP FITTINGS
(1'-6" Travel)**

**2035.02497 AIR
TAKE-UP
FITTINGS (1'-0" Travel)**

NOTE: Curves are not included in assembly.



**2035.01114
EXPANSION SLEEVE**

Expansion sleeves are used mainly in bake ovens and are located in each track in the area of the oven expansion joint. This allows both oven and conveyor to expand and contract in unison. Many ovens, depending on length and temperature, do not have expansion joints. In such cases, it is often advisable to use an expansion sleeve at the exit and entrance tracks to prevent snaking or waviness in the track both inside and outside the oven.

Relative to installation, the movable track in the sleeve should be moved out 2" from the compressed length which would then be an overall of 1'-6" instead of 1'-4" as shown. This allows for both contraction and expansion in the track.

DRIVE UNITS

The drive units are fabricated using a skeleton drive unit. The motor and reducer are connected with sprockets and roller chain to the head shaft, which drive the caterpillar chain and transmit the power to the conveyor chain. Adequate protection is provided for reasonable momentary overloads, and the assembly is also equipped with a friction clutch for protection against excessive overload.

The 2035.01371 drive uses a 3/4 horsepower inverter duty motor and a speed reducer with a 50 to 1 ratio. The drive has a constant speed of 16 feet per minute at 60 hertz, or by using the 2035.02798 (230V) or 2035.02800 (460V) A.C. inverter, has a speed range of 3 to 16 FPM.

The 2035.01372 drive uses a 1 1/2 horsepower inverter duty motor and a speed reducer with a 20 to 1 ratio. The drive has a constant speed of 45 feet per minute at 60 hertz, or by using the 2035.02799 (230V) or 2035.02802 (460V) A.C. inverter, has a speed range of 9 to 45 FPM.

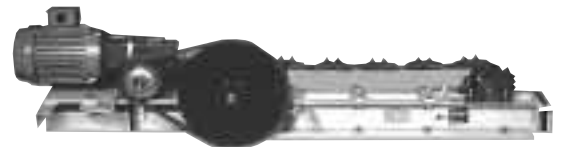
These drives are used in Zig-Zag Power Chain Conveyors, Twin-Trak and Over-Way Power & Free Conveyor Systems.

The capacity is 750 lbs. chain pull.

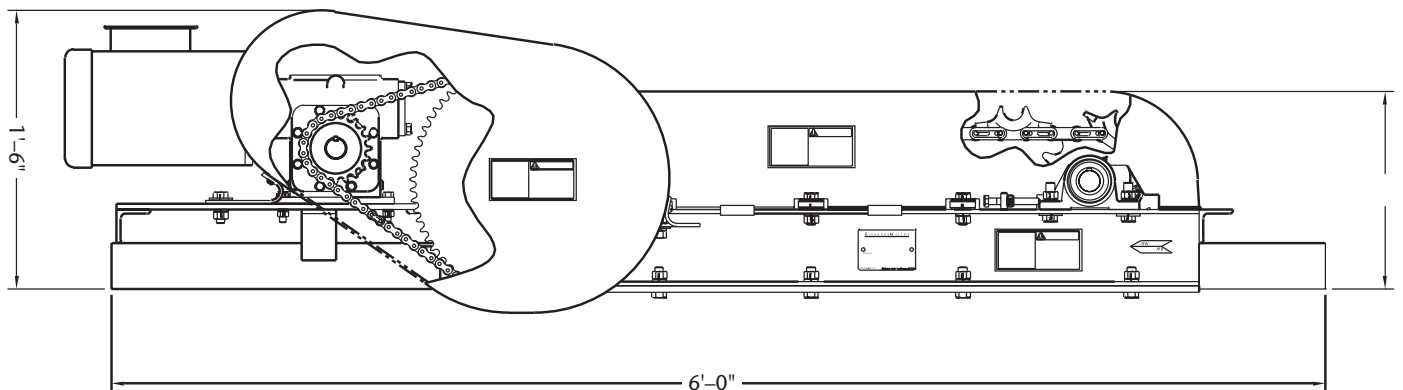
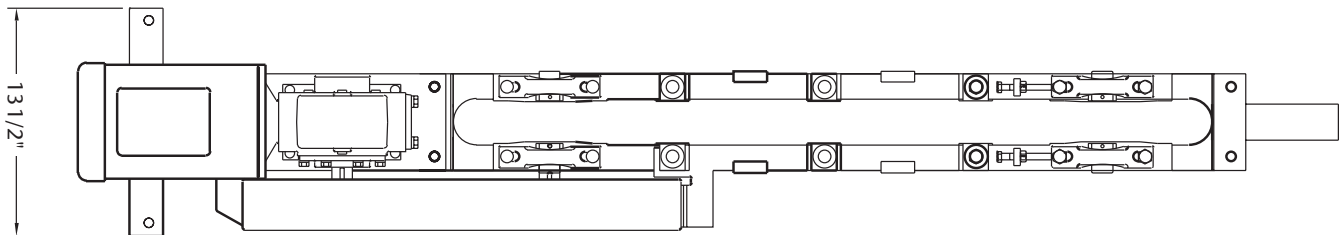
NOTE: The chain covers are supplied in Safety Yellow.



Drive Unit (shown with Chain Guards)



Drive Unit (shown without Chain Guards)



SKELETON DRIVE



2035.01373 (shown with Chain Guards)

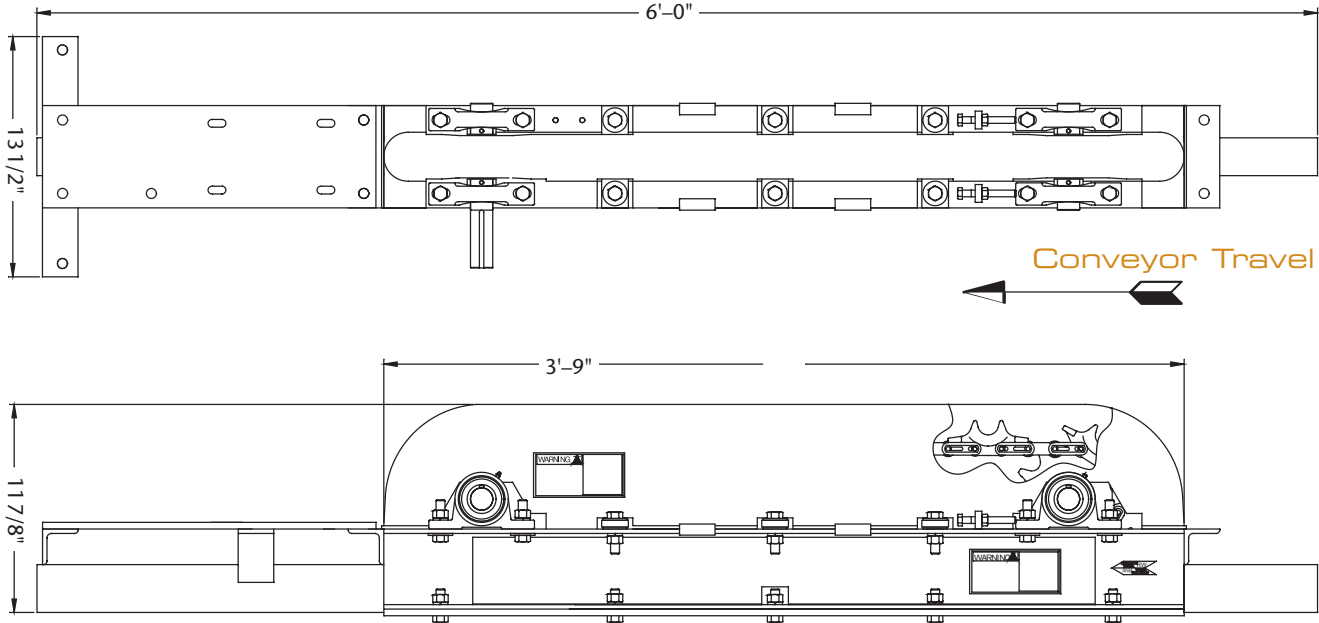


2035.01373 (shown without Chain Guards)

The 2035.01373 skeleton drive unit incorporates the use of a caterpillar drive chain connection to the head shaft and idler shaft assembly. The skeleton drive is not equipped with a motor, reducer, friction clutch, driven sprocket, or roller chain.

The skeleton drive unit is used in Zig-Zag, Twin-Trak and Over-Way applications. Most commonly, the unit is used where the customer needs to replace their existing drive, but wants to use the existing motor, reducer, and sprockets. The skeleton is also used where the customer wants to supply his own motor, reducer, and sprockets. The unit can be used with an extended head shaft and jackshaft to join two or more conveyors together for timing purposes.

The capacity of the unit is 750 lbs. Chain Pull.



LUBRICATION AND INSPECTION SECTION

The proper lubrication of the conveyor chain is of paramount importance not only to the successful operation of a conveyor system, but to the life of the product as well. Proper lubricant should be recommended by a qualified lubricating engineer who has made a study of the processing machinery and atmospheric conditions to which the system will be subjected. Special safeguards must be taken to protect the chain when it moves through high temperatures, extremely low temperatures, acid conditions such as bonderizing, alkaline washers, or other chemicals which could reduce the life of the bearings and other parts. We caution against the use of graphite based lubricants which tend to build up excessive deposits of foreign matter unless the chain is thoroughly cleaned at regular intervals. We urge the use of our sanitary hook in acid or paint spray conditions.

2035.02724 Automatic Timer Controlled Lubricator

This automatic timer controlled lubricator is designed to precisely lubricate the critical bearing points of the conveyor chain. It has five nozzles, located to dispense lubricant on the vertical and lateral wheel bearings, vertical link pin and roller. Each nozzle has its own adjustable valve to control the amount of lubricant that is dispensed. It is equipped with a 168 hour adjustable timer which can be set for as little as 20 minutes out of 168 hours of conveyor operation.

2035.00669 Electro-Brush Oiler

The illustration shows the brush type oiling device. The brush makes contact with the chain, distributing the lubricant to the various parts. A 115 volt solenoid shut-off valve is provided at the bottom of the tank reservoir.

2035.00664 Brush Oiler (Not Shown)

The brush oiler applies lubrication to the chain by gravity feed. The brush makes contact with the chain, distributing the lubricant to the various parts. A toggle shut off at the top of the reservoir is provided. NOTE: We do not recommend this oiler in finishing systems.

2035.00820 Inspection Track Section

The inspection track section, formed out of this 3/16" track, facilitates inspection and maintenance at points other than the drive unit. It may be placed in any run of straight track. This section is made with the top and sides open down to the center of the chain. This allows for full inspection of the chain for proper lubrication, chain tension, and general condition of the conveyor chain. The opening is covered by a removable housing and is equipped with a handle. The inspection section also permits easy installation and removal of chain. The most desirable location is at the lowest point between the output of the drive unit and the take-up unit. The inspection section is furnished in a standard finish to match the rest of the system.

The inspection section is used in all Zig-Zag, Twin-Trak, and Over-Way systems. In certain applications, such as a large system, it may be desirable to use several inspection sections.



2035.02724 Automatic Timer
Controlled Lubricator

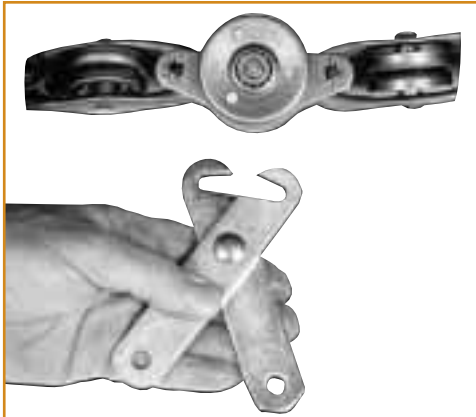


2035.00669 Electro-Brush Oiler



2035.00820 Inspection Section

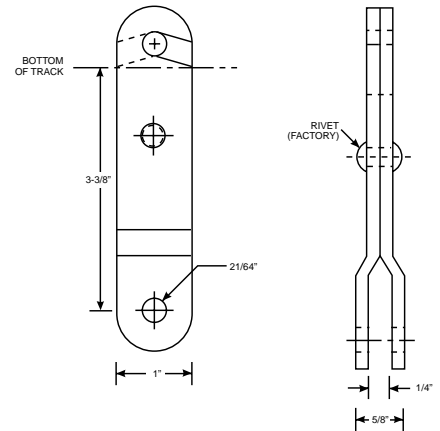
2035 STANDARD LOAD PENDANTS



**2035.00319 Standard Clevis Load
Pendants, Capacity 75 lbs.**

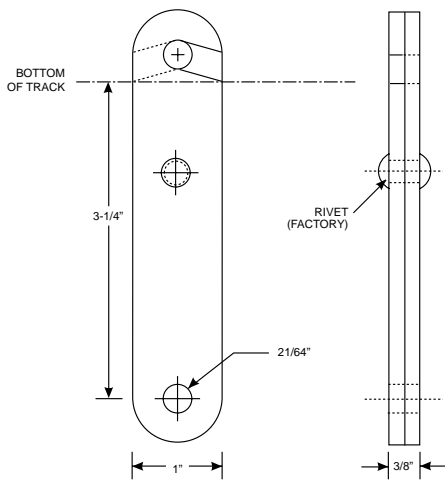
We have developed a series of standard load carrying devices designed to cover the essential requirements for connecting the load to the conveyor chain.

Since the ultimate device required to carry the load on the conveyor must be specially designed to fit the article which is being handled, it is almost impossible to illustrate a load pendant for every problem. It is also desirable in many cases to experiment with various types of load carriers before finding the one most satisfactory for the job.



The standard load pendants shown on this and following pages are carried in stock for immediate shipment.

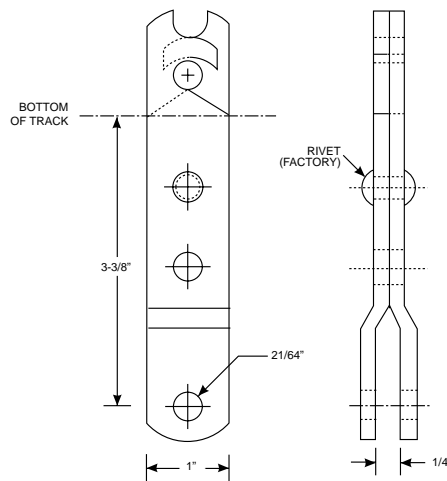
Almost any type of load suspension fitting can be attached to the 2035.00319 clevis pendant.



Part 2035.00318 Straight Side Pendant

The Straight Side Pendant is similar to the Standard Clevis Pendant except the pendant sides are straight. It uses a scissor-like action to attach directly to the load pin on the vertical link of the conveyor chain.

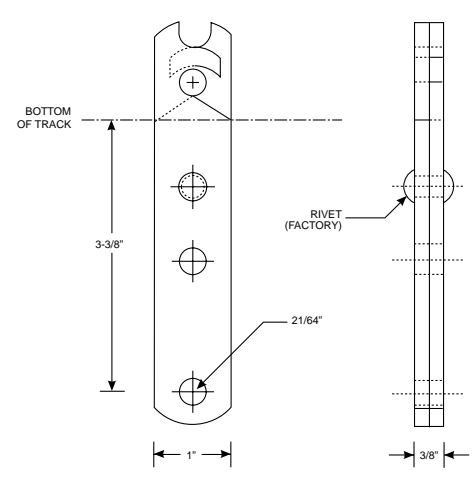
The pendant may be spaced on multiples of 6". The pendant is furnished in a zinc-plated finish. This type of pendant is used where it is permitted to have swinging loads. The pendant is allowed to pivot, as the conveyor makes elevation changes.



Part 2035.00316 Rigid Clevis Pendant

The Rigid Clevis Pendant is designed to be used where a swinging load may be objectionable. This pendant is similar to the Rigid Straight Side Pendant except there is an offset in the pendant sides to allow for a 1/4" gap.

The pendant may be spaced on multiples of 6". The pendant is furnished in a zinc-plated finish. This pendant always remains perpendicular to the track. The pendant can be attached to a load bar or directly to a product rack.



Part 2035.00317 Rigid Straight Side Pendant

The Rigid Straight Side Pendant is similar to the Rigid Clevis Pendant except the sides are straight. It may be spaced on multiples of 6". It attaches directly to the load pin on the vertical link of the conveyor chain and is furnished in a zinc-plated finish.

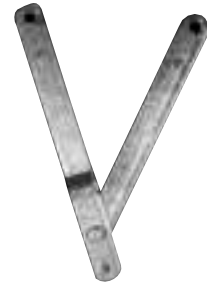
This pendant may be used where a swinging load may be objectionable or not permitted. The pendant always remains perpendicular to the track.

2035 STANDARD LOAD PENDANTS

2035.00264 RIGID "V" PENDANT

Capacity 75 lbs. Max.

Standard offset of 8" as shown may be increased on special order to 11" maximum for vertical travel or any desired offset for horizontal travel, and decreased to a minimum of 3 1/4".



2035.00264

2035.02706 SUSPENSION INDEXING LOAD HOOK

Capacity 75 lbs.

The load hook illustrated is used to carry loads that must be indexed from time to time by the operator at 90°. Bottom of track to throat of hook 7 3/8".



2035.02706

No. 2035.02775 SWIVEL FIXTURE

Capacity 75 lbs. Max.*

This fixture permits continuous rotation of a product through a finishing operation by permitting the ball-bearing roller to turn against a continuous flat bearing strip, through the turning area.



2035.02775

No. 2035.02693 SINGLE SUSPEN- SION INDEXING LOAD HOOK

Capacity 75 lbs.

The pendant is a two piece design with the rigid pendant and cast hook assembly. The pendant may be spaced on multiples of 6". This pendant is used in "Zig-Zag" applications where the load must be manually or automatically indexed in 90° increments.

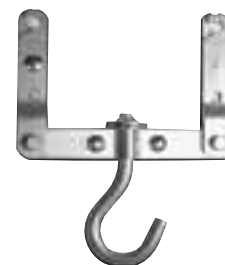


2035.02693

No. 2035.00257 DOUBLE SUSPENSION LOAD HOOK

Capacity 150 lbs.

The load is suspended from two vertical load units increasing the capacity of the load carrier. Standard clevis pendants are attached to the conveyor chain on 6" centers. The load hook revolves freely.



2035.00257

**Where unit loads are less than 8 lbs. minimum preloading is recommended to insure smooth rotation.*

2035 STANDARD LOAD PENDANTS



2035.02772

2035.02772 DOUBLE SUSPENSION LOAD BAR ASSEMBLY

Capacity 150 lbs. per assembly

By suspending the load from two points on the chain, the load carrying capacity is increased. This pendant can be attached to the conveyor chain on a minimum of 12" centers. The basic load bar assembly provides a means of attaching a product hook or clevis directly to the center hole.



2035.02702

2035.02702 DOUBLE SUSPENSION LOAD HOOK ASSEMBLY

Capacity 150 lbs. per assembly

By suspending the load from two points on the chain, the load carrying capacity is increased. This pendant can be attached to the conveyor chain on a minimum of 12" centers. The Load Hook assembly is used for finishing applications where the load must be manually indexed in 90° increments.

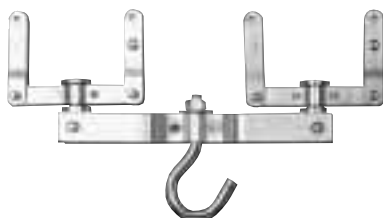


2035.02699

2035.02699 DOUBLE SUSPENSION ROTATING STAR INDEXING PENDANT

Capacity 150 lbs. for manual indexing

Distance from bottom of track to throat of hook is 8 7/8". This pendant can be used to manually index or automatically index the part. This pendant can be used with a Rotating Cam or Continuous Rotating Cam, permitting automatic rotation and indexing in increments of 90°. The pendants and load bar have a zinc plated finish while the hook assembly is finished in Richards-Wilcox Gloss-Tek powder coat. This pendant is most commonly used for finishing applications where it is necessary to rotate the part. This pendant assembly can be spaced on 6" increments with a minimum of 12" centers.



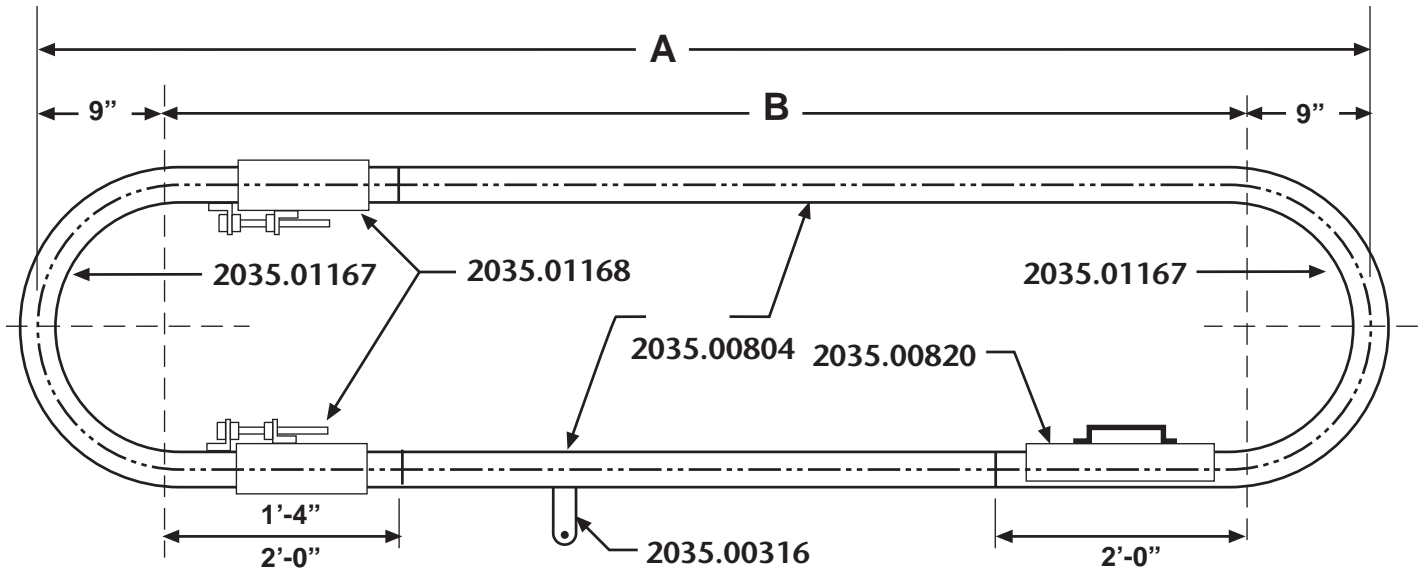
2035.00430

2035.00430 MULTIPLE SUSPENSION LOAD HOOK

Capacity 300 lbs.

By suspending the load from four points on the chain, the load carrying capacity is increased again. Standard clevis pendants are attached at four points to each vertical link pendant, and the load bar is free to swivel so that there will be no binding action when going around curves. Bottom of track to throat of hook is 9 1/16".

The Organizer Loop is a gravity loop conveyor consisting of standard Richards-Wilcox materials. Ideal for any assembly application.



		2035.00804	2035.00155	2035.00820	2035.01167	2035.01168	2035.01974 CHAIN		
A DIM.	B DIM.	QUANTITY REQUIRED	ORDER QUANTITY	WELDING JIG	INSPECTION SECTION	CURVE	TAKEUPS	QUANTITY REQUIRED	ORDER QUANTITY
8' - 0"	6' - 6"	10 ft.	(10 ft.)	(1)	1	2	2	18 ft.	(20 ft.)
10' - 0"	8' - 6"	14 ft.	(20 ft.)	(1)	1	2	2	22 ft.	(30 ft.)
12' - 0"	10' - 6"	18 ft.	(20 ft.)	(1)	1	2	2	26 ft.	(30 ft.)
14' - 0"	12' - 6"	22 ft.	(30 ft.)	(1)	1	2	2	30 ft.	(30 ft.)
16' - 0"	14' - 6"	26 ft.	(30 ft.)	(1)	1	2	2	34 ft.	(40 ft.)
18' - 0"	16' - 6"	30 ft.	(30 ft.)	(1)	1	2	2	38 ft.	(40 ft.)
20' - 0"	18' - 6"	40 ft.	(40 ft.)	(1)	1	2	2	42 ft.	(50 ft.)
24' - 0"	22' - 6"	42 ft.	(50 ft.)	(1)	1	2	2	50 ft.	(50 ft.)
30' - 0"	28' - 6"	54 ft.	(60 ft.)	(1)	1	2	2	62 ft.	(70 ft.)
35' - 0"	33' - 6"	64 ft.	(70 ft.)	(1)	1	2	2	72 ft.	(80 ft.)
40' - 0"	38' - 6"	74 ft.	(80 ft.)	(1)	1	2	2	82 ft.	(90 ft.)

NOTE 1: It will be necessary to add the cost of the 2035.00316 rigid pendants when using Richards-Wilcox 2035.01974 Chain.

NOTE 2: When using the 2035.01096 chain, remember the pendants are an integral part of the chain and are spaced at 8" centers.

SUGGESTED SUSPENSION METHODS

WELDED

Where the building trusses are too far apart for the 10'-0" hanger supports, it is necessary to install headers or superstructure. Since conditions vary greatly from job to job, the header steel must be designed and installed to accommodate the conveyor and the building.

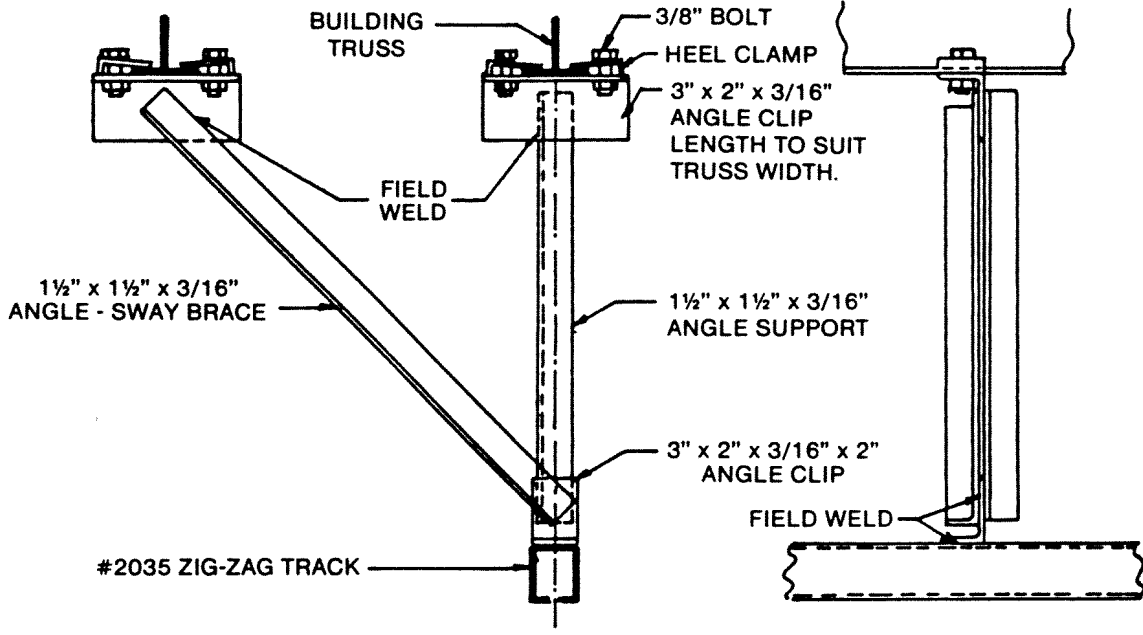
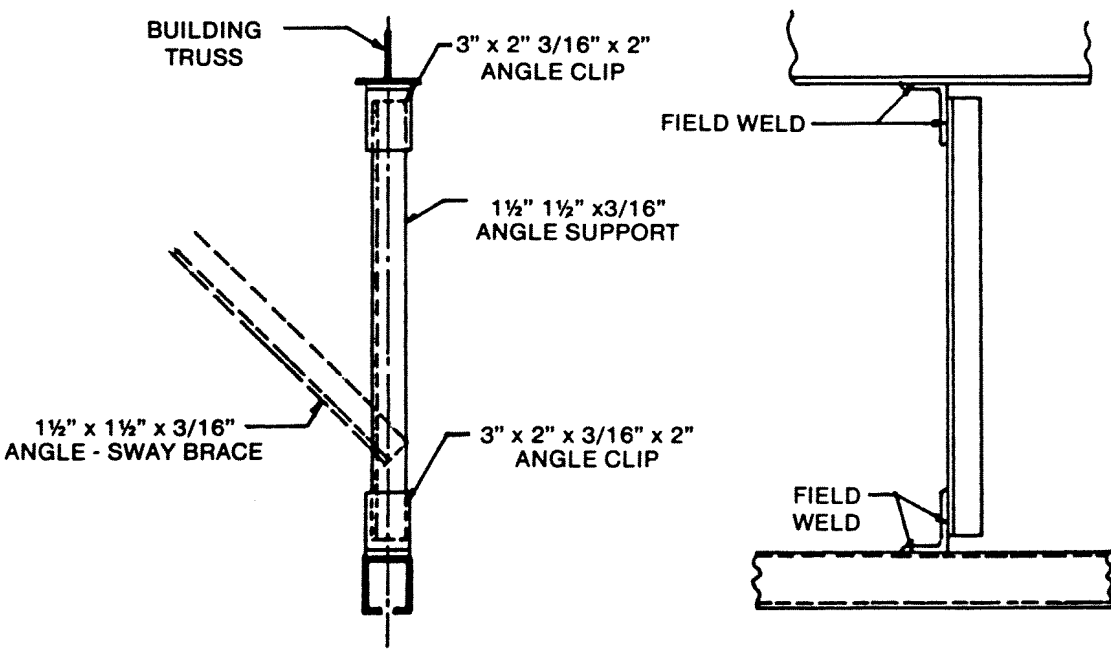


FIGURE 7 (BOLTED CONSTRUCTION)

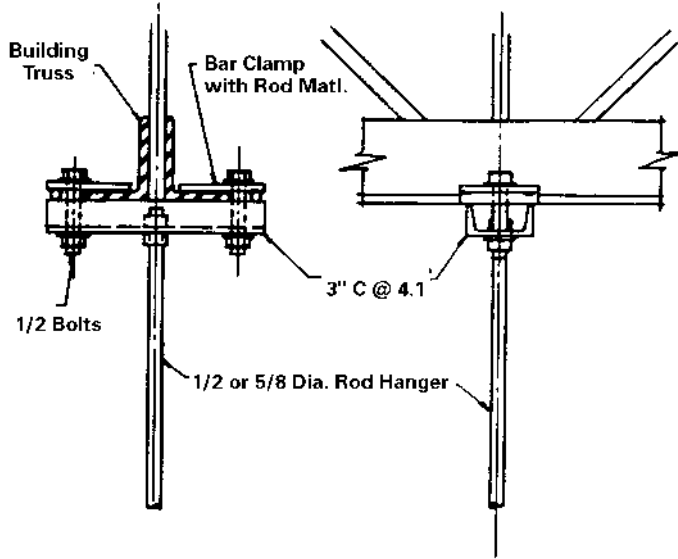


(WELDED CONSTRUCTION)

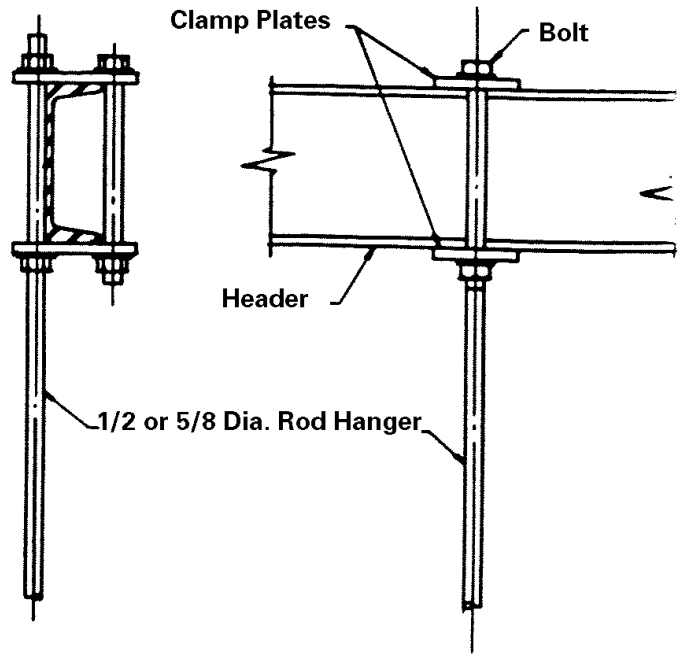
SUGGESTED SUSPENSION METHODS

THREADED ROD

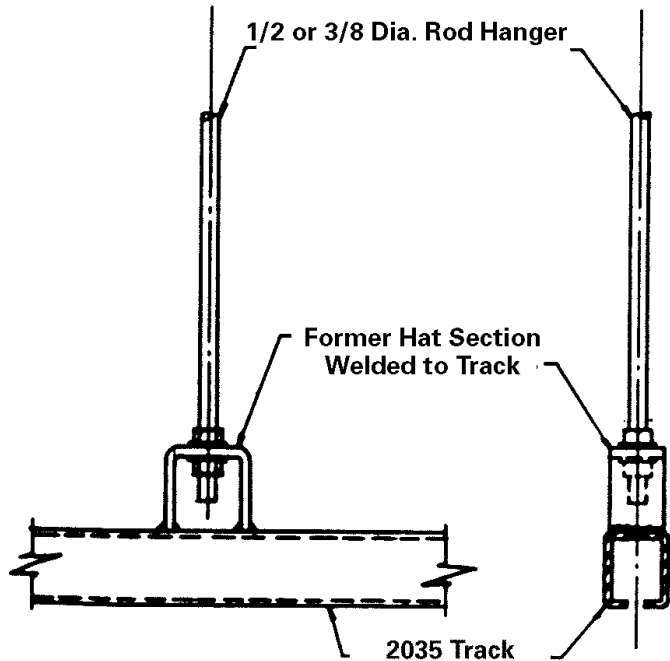
Connection to Lower Chord of Building Truss or Joist with Rod Type Hangers



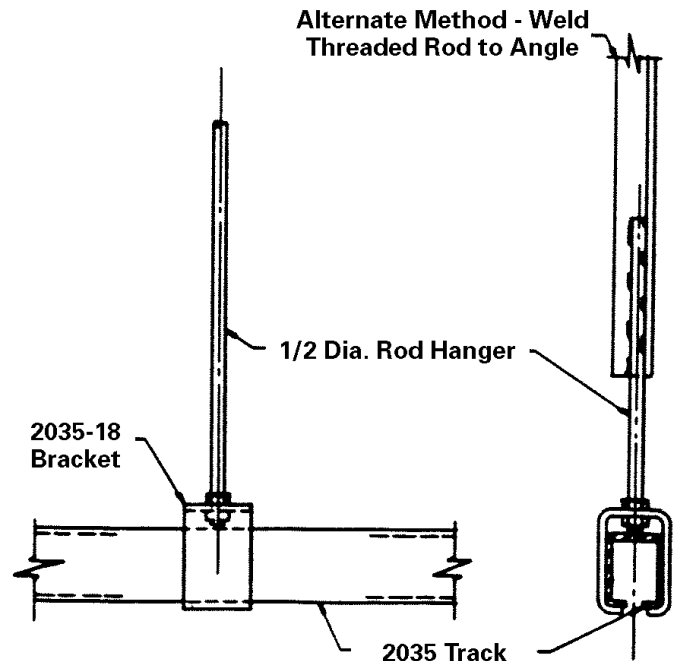
Connection to Channel Header with Rod Type Hangers



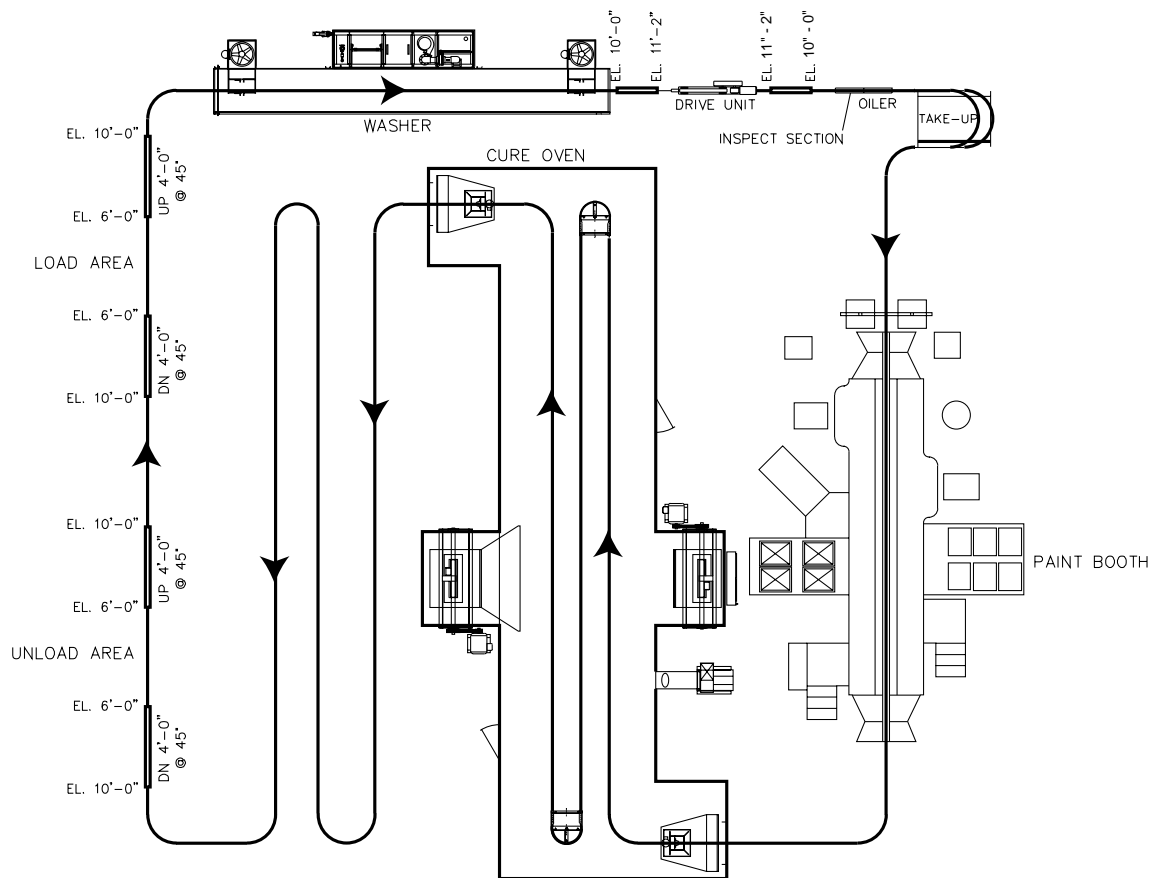
Connection to 2035 Track Using Welded Bracket and Rod Type Hanger



Connection to 2035 Track Using 2035.01912 Bracket



NO. 2035 ZIG-ZAG CONVEYORS



BILL OF MATERIAL

QUANTITY	ITEM NUMBER	DESCRIPTION
3	2035.00155	Welding Jig
235	2035.02775	Swivel Fixture
37	2035.00471	Track (3/16") 10' length
1	2035.00820	Inspection Section
3	2035.00980	Top Vertical Curve 2'-0" Radius x 90 Degrees
3	2035.00981	Bottom Vertical Curve 2'-0" Radius x 90 Degrees
10	2035.01352	Horizontal Curve 2'-0" Radius x 90 Degrees
1	2035.01371	Drive Unit 3-16 FPM
1	2035.01687	Framed Take-up Package
1	2035.01700	Air Take-up Package
47	2035.01974	Conveyor Chain 10' Lg. Cotter
2	2035.02012	Traction Wheel 24" Dia.
2	2035.02064	Horizontal Curve 1'-6" Radius x 90 Hardened
1	2035.02724	Chain Lubricator with Timer
1	2035.02800	A.C. Inverter 3/4 H.P. 208/230V 3Phase